

This version of *Lightly Row* is written in the bass staff, to be played with your left hand.

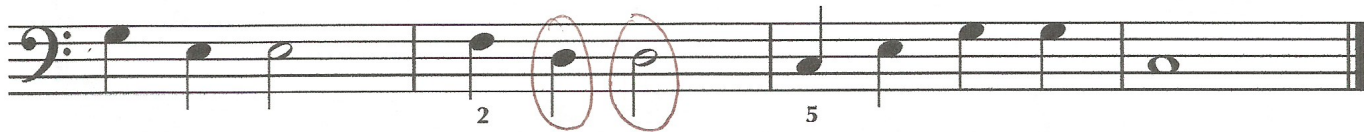
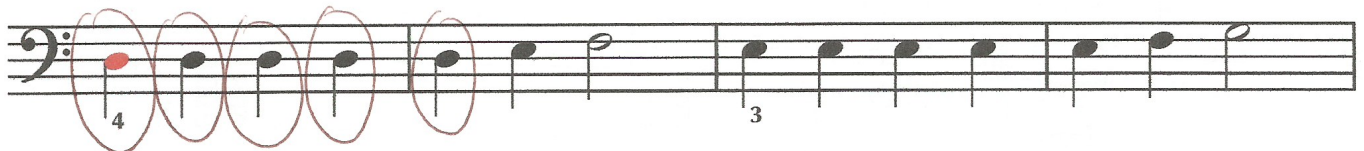
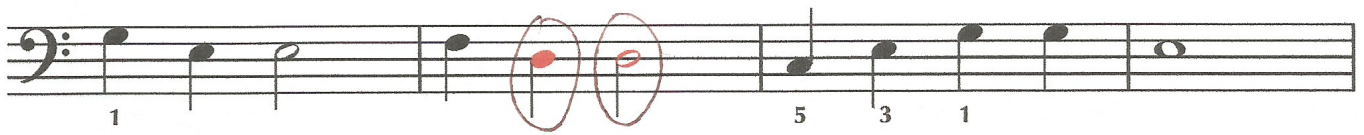
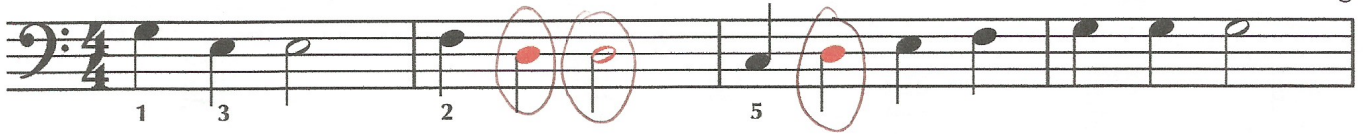
How many bass clef D's are in *Lightly Row*?

Answer: 12



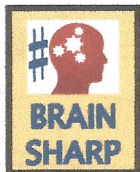
Lightly Row

Traditional German Folk Song



MUSICAL MIND GAMES

In each line, there is something that does not belong. Circle the word or symbol which is not musical:



- 1) line space ~~plane~~
- 2) \flat ~~%~~ \sharp
- 3) ~~third note~~ half note quarter note
- 4) A ~~H~~ D
- 5) bar beat ~~bat~~
- 6) tie ~~coat~~ note
- 7) play read ~~nzp~~ ☺
- 8) ~~dock~~ staff measure
- 9) stem ~~pod~~ dot
- 10) rhythm melody ~~homily~~
- 11) *f* *p* ~~flap~~
- 12) rest ~~flap~~ clef