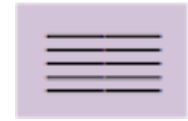


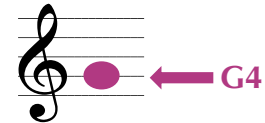
THE STAFF

Music is written on a *staff* made up of 5 lines and 4 spaces like this: →



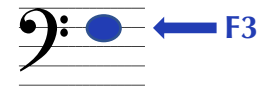
THE TREBLE CLEF G indicates that you will play notes with your right hand (RH) on the keyboard.

The treble clef is also known as the *G-Clef* because it indicates **G4**, which is the G above middle C on the 2nd line of the staff (always count from the bottom up).



THE BASS CLEF F indicates that you will play notes with your left hand (LH) on the keyboard.

The bass clef is also known as the *F-Clef* because it indicates **F3**, which is the F below middle C on the 4th line (from the bottom) of the staff.



THE GRAND STAFF = G + F staves together!

Piano music is written on the *grand staff*, with notes on both the bass and treble staves. Your right hand plays the notes on the treble staff, and your left hand plays the notes on the bass staff.

Treble staff

Bass staff

